



JAYCO THIEF HATCH MANUALS

INSTALLATION •

MAINTENANCE •

PLUNGER REMOVAL & SPRING CHANGE •

PARTS LISTS •

UPGRADE OLDER HATCHES •



BEFORE INSTALLING OR MAINTAINING A THIEF HATCH, CONSULT YOUR COMPANY'S SAFETY AND OPERATIONS MANUALS CONCERNING THE DANGERS INVOLVED WITH WORKING ON A THIEF HATCH AND TANK BATTERY.

USE EXTREME CAUTION!

PROPER INSTALLATION OF JAYCO THIEF HATCH IS CRITICAL TO THE SEALING PERFORMANCE OF THE HATCH. PLEASE TAKE CARE NOT TO OVER-TIGHTEN THE BOLTS DURING INSTALLATION.

ORDER JAYCO PARTS FROM YOUR LOCAL OILFIELD SUPPLY COMPANY OR TANK MANUFACTURER.

ONLY USE JAYCO PARTS ON JAYCO THIEF HATCHES. THE SPRINGS AND GASKETS HAVE BEEN DESIGNED TO WORK WITH THE SPECIFIC MEASUREMENTS OF JAYCO THIEF HATCHES. THE INTERNAL PARTS ARE NOT INTERCHANGEABLE WITH OTHER BRANDS.



9412 NICHOLS ROAD • PO BOX 20026 • OKLAHOMA CITY, OK 73156

800-654-9263 • 405-751-6903 • FAX 405-755-7940 • WWW.JAYCO.ORG

INSTALLATION GOALS

- TIGHTEN THE BOLTS AS EVENLY AS POSSIBLE
- USE THE LEAST AMOUNT OF TORQUE AS IS NECESSARY TO SEAL THE BASE FLANGE TO THE TANK
- OVER-TIGHTENING THE 16 BOLTS CAN LEAD TO GASKET CREEP & FLANGE LEAKS
- FOR BEST RESULTS USE A SPOOL OR NOZZLE IN-BETWEEN THE HATCH AND TANK FOR A FLAT MOUNTING SURFACE
- WHEN MOUNTING DIRECTLY TO A VESSEL, USE EXTRA CAUTION TIGHTENING THE BOLTS TO AVOID DISTORTING THE BASE TO THE CURVE OF THE VESSEL



1. BASE GASKET

PLACE THE BASE GASKET ON TOP OF THE MOUNTING SURFACE BEFORE INSTALLING THE THIEF HATCH.

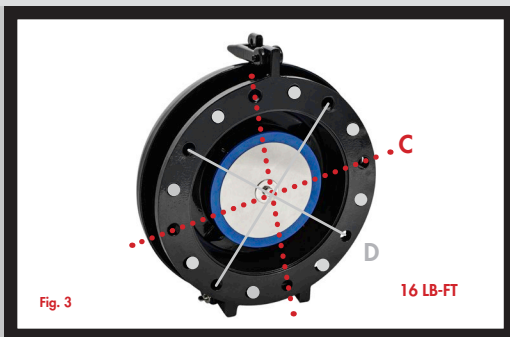
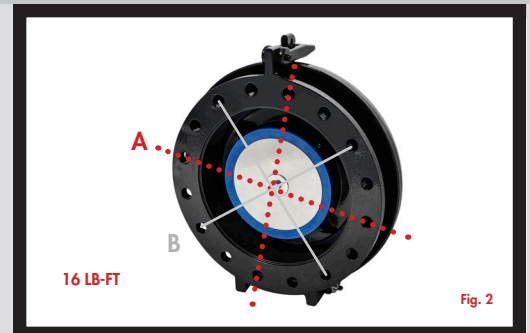
INSERT ALL 16 BOLTS FROM BOTTOM SIDE

2. SET THE SEAL

START WITH 8 NUTS, ALTERNATING BETWEEN BOLT HOLES
EVENLY TIGHTEN 4 NUTS IN A CROSS PATTERN UNTIL SNUG (A)

EVENLY TIGHTEN THE NEXT CROSS OF NUTS UNTIL SNUG (B)

RECHECK THE 8 NUTS TO ENSURE THEY ARE EQUALLY TIGHT



3. CONTINUE...

EVENLY TIGHTEN ANOTHER SET OF 4 NUTS IN A CROSS PATTERN UNTIL SNUG (C), THE SEAL IS ALREADY SET, *USE CAUTION TO NOT OVER-TIGHTEN*

THE REMAINING 4 NUTS CAN BE TIGHTENED UNTIL SNUG (D)

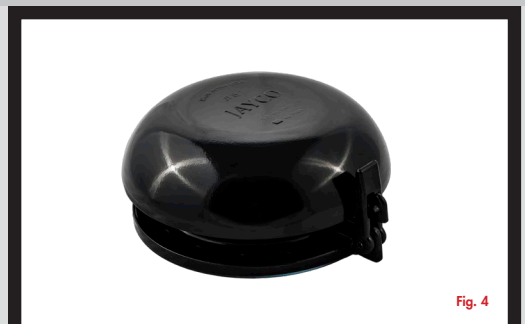
RECHECK ALL 16 NUTS TO ENSURE THEY ARE EQUALLY TIGHT

4. TEST

APPLY A SAFE *ALL PURPOSE LEAK DETECTOR* OR SOAPY WATER AROUND THE OUTSIDE OF THE BASE GASKET & THE BOLT HEADS

WHEN THE VESSEL IS UNDER PRESSURE, MONITOR FOR BUBBLES

IF BUBBLES ARE PRESENT, WHEN SAFE, SLIGHTLY TIGHTEN ALL 16 NUTS IN A CRISS-CROSS PATTERN





JAYCO THIEF HATCH MAINTENANCE

BEFORE PROCEEDING WITH MAINTENANCE ON THE THIEF HATCH, CONSULT YOUR COMPANY'S SAFETY AND OPERATIONS MANUALS CONCERNING THE DANGERS INVOLVED WITH WORKING ON A THIEF HATCH AND TANK BATTERY. **USE EXTREME CAUTION!**

OBSERVE...

- THE OPERATION OF THE THIEF HATCH, IS IT HOLDING PRESSURE?
- DOES IT RELIEVE PRESSURE AS SET?

CLEAN...

- KEEP THE GASKETS, ALUMINUM SEALING SURFACES, AND MOVING PARTS FREE OF DIRT AND RESIDUE

INSPECT...

- THE GASKETS FOR WEAR, CRACKING AND SWELLING; REPLACE AS NEEDED
- THE ALUMINUM SEATS ON THE BASE AND PLUNGER FOR DAMAGE AND REPAIR OR REPLACE AS NEEDED

REPAIR OR REPLACE...

- SPRINGS FATIGUE OVER TIME, REPLACE AS NEEDED
- REPLACE GASKETS & SPRINGS WITH JAYCO MATERIALS ONLY
- IF H₂S IS PRESENT OR OTHER CHEMICALS THAT REACT WITH THE CURRENT GASKETS, REPLACE WITH VITON® GASKET SETS
- IF AMBIENT TEMPERATURE IS ABOVE 200 DEGREES F, REPLACE GASKETS WITH VITON®

ORDER JAYCO PARTS FROM YOUR LOCAL OILFIELD SUPPLY COMPANY OR TANK MANUFACTURER

**** KEEP THE THIEF HATCH CLEAN AND INSPECT ON A REGULAR BASIS ****

IF LEAKS PERSIST, ORDER THE REDESIGNED JAYCO PLUNGER ASSEMBLY DESIGNED FOR GREATER SEALING - PART NO. JT2818S WITH SUPREME65 (HIGH GRADE BUNA N) OR JT2818WV WHICH HAS VITON® GASKETS.

THE FOLLOWING PAGES WILL ASSIST YOUR SELECTION OF REPLACEMENT PARTS

VITON® IS A REGISTERED TRADEMARK OF DUPONT DOW ELASTOMERS

800-654-9263 • 405-751-6903 • FAX 405-755-7940 • WWW.JAYCO.ORG



REMOVING PLUNGER ASSEMBLY & CHANGING SPRINGS

JT-8.2 | JT-8.1 | JT-8 | JT-20.2 | JT-20.1 | JT-20

BEFORE PROCEEDING WITH MAINTENANCE ON THE THIEF HATCH, CONSULT YOUR COMPANY'S SAFETY AND OPERATIONS MANUALS CONCERNING THE DANGERS INVOLVED WITH WORKING ON A THIEF HATCH AND TANK BATTERY. **USE EXTREME CAUTION!**

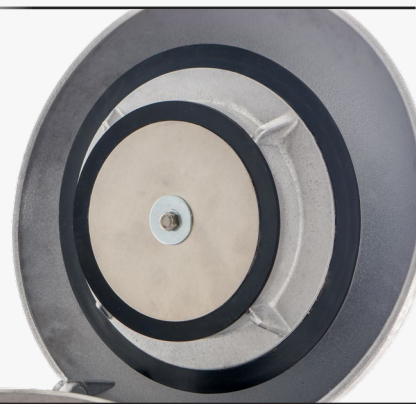
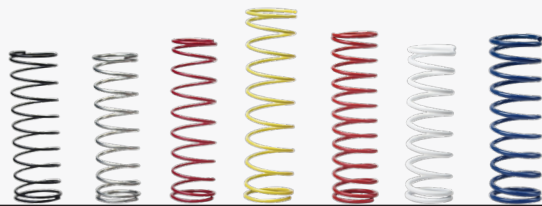
TOOLS REQUIRED...

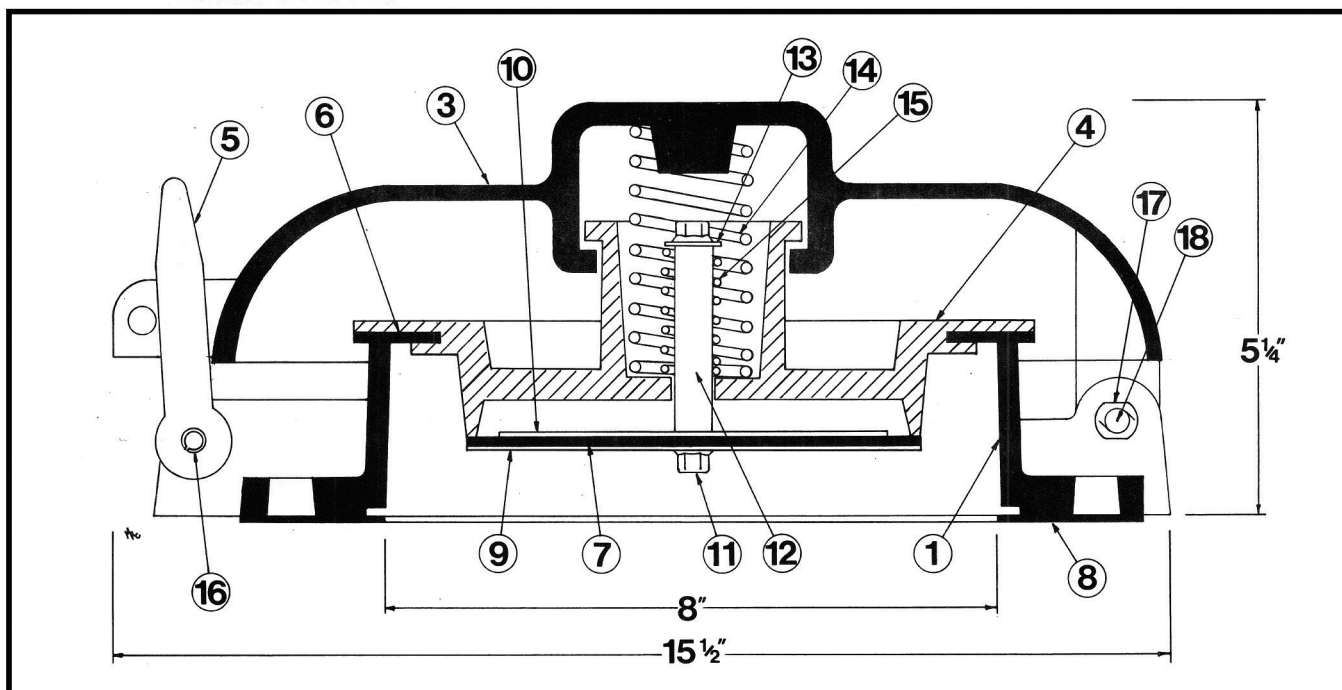
- SAFETY GEAR (GLOVES, GOGGLES, ETC.)
- REPLACEMENT PARTS (SPRINGS, GASKETS, OR PLUNGERS)
- POSSIBLY A 7/16" & 3/8" WRENCH TO TAKE APART THE PLUNGER ASSEMBLY

OVERVIEW...

- PRESS PLUNGER INTO LID
- TURN TO UNLOCK
 - TRY COUNTER-CLOCKWISE FIRST
 - THEN CLOCKWISE IF THAT DOES NOT WORK
- REPLACE OLD SPRING WITH NEW SPRING
- IF REPLACING VACUUM GASKET OR VACUUM SPRING,
 - USE A 7/16" WRENCH ON LOWER SCREW AND 3/8" ON THE TOP SCREW OF PLUNGER ASSEMBLY
 - WHEN DONE, RE-TIGHTEN THE SCREWS *BEYOND SNUG*
- INSTALLATION OF PLUNGER IS OPPOSITE OF REMOVAL
- WIPE OFF VACUUM GASKET (TOP SIDE) & PRESSURE GASKET (TOP & BOTTOM)

ORDER JAYCO PARTS FROM YOUR LOCAL OILFIELD SUPPLY
COMPANY OR TANK MANUFACTURER





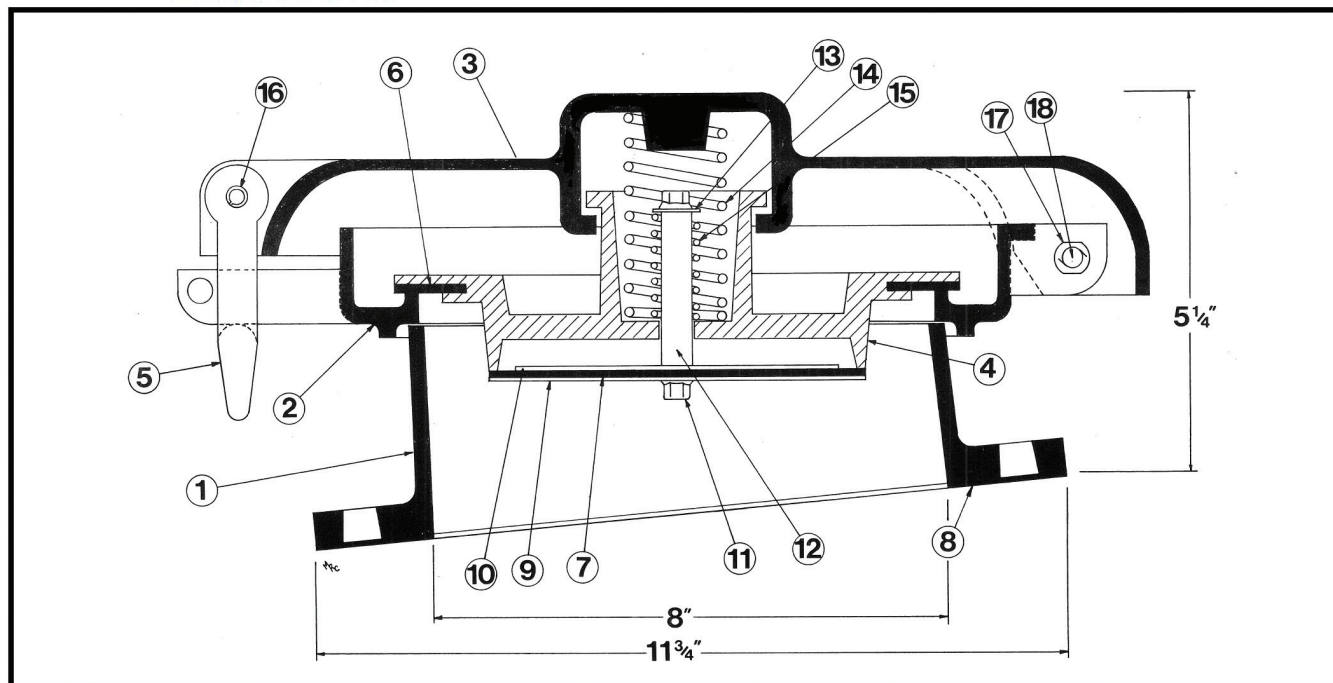
| | | |
|---|---------------------------------------|--------------|
| 1. BASE (RECOMMENDED TORQUE 16-18 FT-LBS) | JT28172 | ALUMINUM |
| 3. LID | JT28176 | ALUMINUM |
| 4. PRESSURE/VACUUM VALVE COMPLETE (INCLUDES **) | JT2818S | ALUMINUM |
| 5. LATCH | JT8205 | ALUMINUM |
| **6 & 7. PRESSURE & VACUUM GASKET SET (JT1815S & JT1820S) | JT1SUPR652P | SUPREME65 |
| PRESSURE & VACUUM SOUR SERV. SET (JT1815V & JT1820V) | JT1VITON2P | VITON® |
| PRESSURE & VACUUM BLUE SOUR SET (JT1815WV & JT1820WV) | JT1BLUEVITON | VITON® |
| 8. BASE GASKET | JT1810S | SUPREME65 |
| BASE GASKET (SOUR SERVICE) | JT1810V | VITON® |
| ** 9. WASHER (LOWER MEDIUM) | JT0863 | ALUMINUM |
| WASHER (LOWER LARGE) | JT0865 | ALUMINUM |
| ** 10. WASHER (UPPER) | JT0860 | ALUMINUM |
| ** 11. SCREW HHTL 1/4-20 X 3/4 | JT0871 | STAINLESS |
| ** 12. STEM 1/2 X 2 1/2 | JT0850 | ALUMINUM |
| ** 13. WASHER 1/4 | JT0861 | STAINLESS |
| 14. SPRING, PRESSURE (STANDARD 4 oz/IN ² PLATED) | | |
| 4 oz/IN ² (PLAIN) JT0835 | 2 oz/IN ² (BLACK) JT0830 | PLATED OR SS |
| 6 oz/IN ² (YELLOW) JT0837 | 8 oz/IN ² (ORANGE) JT0838 | STAINLESS |
| 12 oz/IN ² (WHITE) JT0846 | 14 oz/IN ² (GREEN) JT0839 | STAINLESS |
| 16 oz/IN ² (BLUE) JT0847 | 24 oz/IN ² (PURPLE) JT0849 | STAINLESS |
| ** 15. SPRING, VACUUM 0.4 oz/IN ² | JT0825 | STAINLESS |
| SPRING, VACUUM 1.0 oz/IN ² | JT0826 | STAINLESS |
| 16. LATCH ROLL PIN | JV0130 | ZINC PLATED |
| 17. PUSH NUT, 1/4 (USE ONLY ONCE - THEN REPLACE) | JT0887 | |
| 18. HINGE PIN (SHORT) | JT0875 | GALVANIZED |
| ** WASHER, INTERNAL LOCK, BOTTOM | JT0872 | STAINLESS |
| MOUNTING BOLT AND NUT SET (16) | JT-B&N | ZINC PLATED |

IN KEEPING WITH, AND FOR THE PURPOSE OF PRODUCT IMPROVEMENT, JAYCO RESERVES THE RIGHT TO MAKE DESIGN CHANGES WITHOUT PRIOR NOTICE.

** INCLUDED WITH PRESSURE/VACUUM VALVE

VITON® IS A REGISTERED TRADEMARK OF DUPONT DOW ELASTOMERS

BULLETIN NUMBER 1015 25



| | | |
|---|---------------------------------------|--------------|
| 1. BASE (RECOMMENDED TORQUE 16-18 FT-LBS) | JT2035 | ALUMINUM |
| 2. LONG PAN | JT2045 | ALUMINUM |
| 3. LID | JT2055 | ALUMINUM |
| 4. PRESSURE/VACUUM VALVE COMPLETE (INCLUDES **) | JT2818S | ALUMINUM |
| 5. LATCH | JT8205 | ALUMINUM |
| ** 6 & 7. PRESSURE & VACUUM GASKET SET (JT1815S & JT1820S) | JT1SUPR652P | SUPREME65 |
| PRESSURE & VACUUM SOUR SERV. SET (JT1815V & JT1820V) | JT1VITON2P | VITON® |
| PRESSURE & VACUUM BLUE SOUR SET (JT1815WV & JT1820WV) | JT1BLUEVITON | VITON® |
| 8. BASE GASKET | JT1810S | SUPREME65 |
| BASE GASKET (SOUR SERVICE) | JT1810V | VITON® |
| ** 9. WASHER (LOWER MEDIUM) | JT0863 | ALUMINUM |
| WASHER (LOWER LARGE) | JT0865 | ALUMINUM |
| ** 10. WASHER (UPPER) | JT0860 | ALUMINUM |
| ** 11. SCREW HHTL 1/4-20 X 3/4 | JT0871 | STAINLESS |
| ** 12. STEM 1/2 X 2 1/2 | JT0850 | ALUMINUM |
| ** 13. WASHER 1/4 | JT0861 | STAINLESS |
| 14. SPRING, PRESSURE (STANDARD 4 oz/IN ² PLATED) | | |
| 4 oz/IN ² (PLAIN) JT0835 | 2 oz/IN ² (BLACK) JT0830 | PLATED OR SS |
| 6 oz/IN ² (YELLOW) JT0837 | 8 oz/IN ² (ORANGE) JT0838 | STAINLESS |
| 12 oz/IN ² (WHITE) JT0846 | 14 oz/IN ² (GREEN) JT0839 | STAINLESS |
| 16 oz/IN ² (BLUE) JT0847 | 24 oz/IN ² (PURPLE) JT0849 | STAINLESS |
| ** 15. SPRING, VACUUM 0.4 oz/IN ² | JT0825 | STAINLESS |
| SPRING, VACUUM 1.0 oz/IN ² | JT0826 | STAINLESS |
| 16. LATCH ROLL PIN | JV0130 | ZINC PLATED |
| 17. PUSH NUT, 1/4 (USE ONLY ONCE - THEN REPLACE) | JT0887 | |
| 18. HINGE PIN (LONG) | JT0885 | GALVANIZED |
| ** WASHER, INTERNAL LOCK, BOTTOM | JT0872 | STAINLESS |
| MOUNTING BOLT AND NUT SET (16) | JT-B&N | ZINC PLATED |

IN KEEPING WITH, AND FOR THE PURPOSE OF PRODUCT IMPROVEMENT, JAYCO RESERVES THE RIGHT TO MAKE DESIGN CHANGES WITHOUT PRIOR NOTICE.

** INCLUDED WITH PRESSURE/VACUUM VALVE

VITON® IS A REGISTERED TRADEMARK OF DUPONT DOW ELASTOMERS

BULLETIN NUMBER 1015 25

UPGRADE ORIGINAL JAYCO THIEF HATCHES

JT-8.1 | JT-8 | JT-20.1 | JT-20



NEW 8.2 PLUNGER

INTRODUCED SUMMER 2025

GREATLY IMPROVE THE SEALING PERFORMANCE OF ORIGINAL STYLE AND .1 JAYCO THIEF HATCHES WITH THE NEW JAYCO PLUNGER ASSEMBLY. THIS PLUNGER IS FEATURED IN THE NEW JT-8.2 AND JT-20.2 AND UPGRADES OLDER JAYCO THIEF HATCHES TO THE NEW STANDARD OF PERFORMANCE. P/N JT2818S FOR SUPREME65 OR JT2818WV FOR BLUE VITON®.



THE ADVANTAGES OF SWAPPING OUT THE PLUNGERS ARE GREAT

- ADVANCED SUPER SEAL PERFORMANCE
- NUMEROUS INTERNAL REFINEMENTS
- GREATLY EXCEEDS THE INDUSTRY STANDARD OF: LESS THAN 1.0 CFH @ 90% OF SET PRESSURE
- ALL NEW MOVING PARTS INSIDE THE HATCH
- QUICK AND EASY REPLACEMENT
- NO TOOLS ARE REQUIRED
- NO NEED TO DISASSEMBLE THE PLUNGER TO INSTALL VACUUM GASKETS
- UPGRADE ALL OF YOUR ORIGINAL JAYCO HATCHES TO A SINGLE STANDARD AND SIMPLIFY YOUR FUTURE GASKET ORDERING

JT-8.1 & ORIGINAL JT-8 PLUNGERS

DISCONTINUED SPRING 2025 & FALL 2011

UPDATE YOUR JT-8 AND JT-8.1 THIEF HATCHES WITH THE NEW JT-8.2 PLUNGER TO EXPERIENCE SOME OF THE SEALING ENHANCEMENTS.

VITON® IS A REGISTERED TRADEMARK OF DUPONT DOW ELASTOMERS

* JAYCO THIEF HATCHES ARE NOT EMERGENCY VENTILATION PRODUCTS

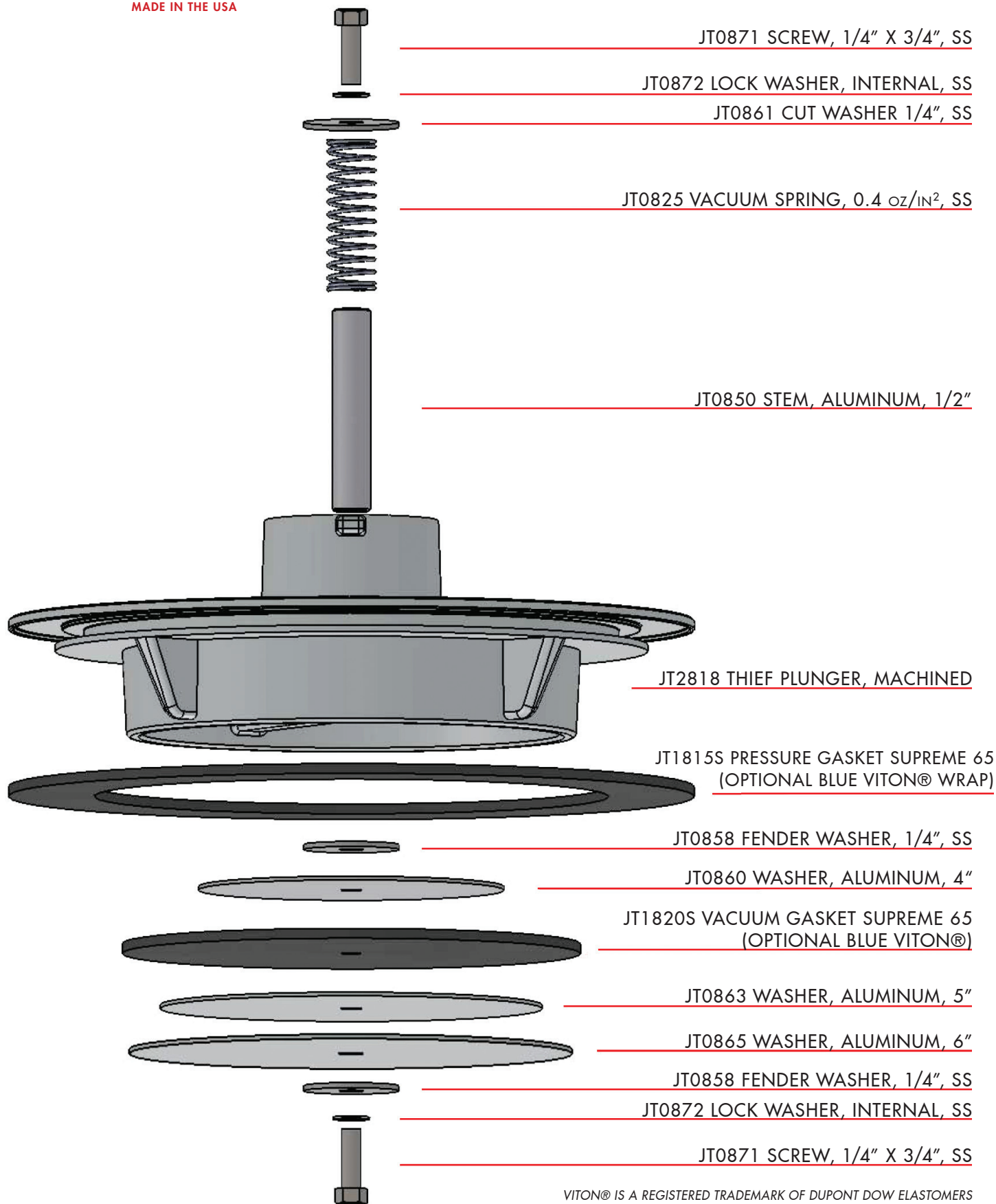


9412 NICHOLS ROAD • PO BOX 20026 • OKLAHOMA CITY, OK 73156

800-654-9263 • 405-751-6903 • FAX 405-755-7940 • WWW.JAYCO.ORG

JAYCO PARTS LIST

JT2818S PLUNGER



VITON® IS A REGISTERED TRADEMARK OF DUPONT DOW ELASTOMERS